

# Agenda



Knoxville Regional TPO  
2050 MTP Update

Technical Advisory Committee (TAC)  
TAC#1 Meeting

November 14, 2023 @ 9 AM to 10:30 AM (City County Building, 400 Main Street, Knoxville, TN)

## Meeting Agenda

1. **Welcome / Introductions – Why are we here?** (TPO) – 5 min
2. **Advisory Committee – Roles & Responsibility** (Stantec) – 10 min
3. **Schedule, Data Needs** (Stantec) – 5 min
4. **Outreach Strategy** (Stantec + TPO) – 10 min
5. **Interactive Mapping Exercise** (All) – 30+ min
6. **Action Items / Next Steps** (Stantec) – 10 min

## Meeting Notes:

Attendees: (24+) see sign in sheet scan.

### This plan will be successful because...

- Talent and experts on this TAC; team cohesion; prior MTP update success
  - Quality public outreach and participation
  - Preparing us for the next TIP cycle
  - Retaining our unique identities
- Traffic focus, and “planning ahead” for the region
- Success of Vision Zero Action Plan process, which set priorities for High Injury Network [<link>](#)
- Knox County Growth Plan, with regional perspective for healthy growth
- TDOT leadership + FHWA 3C process: Continuing, Comprehensive, and Cooperative

### Discussion through presentation slides included the following:

- **Priority Population** / Vulnerable community – 27 indicators; 4 updates to date, 2023 is most recent
  - Themes: Livability + Mobility + Opportunity + Vulnerability = Composite score
  - Report: [<link>](#)
  - Dashboard: [<link>](#) (Aubrey Weiland)
- TPO Regional Roadway Safety Action Plan (2023): [<link>](#)
  - High Injury Network (HIN) established for the region – *use these data for prioritization*
  - Predictive Analysis viewer: [<link>](#)
- Knox County Comprehensive Land Use & Transportation Plan (ongoing): <https://advanceknox.org/>
  - Draft plan: [<link>](#)
- **Oak Ridge National Labs:** 12K+ employees, across several sites: ORNL site / Y-12 site / K-25 site
  - K-25 site: Proposed new airport (transport radioactive isotopes)
- Rural Economic Development topics:
  - Eco-tourism / Mountain Biking / Whitewater Rafting
    - Big South Fork <https://www.nps.gov/biso/index.htm>
    - Great Smoky Mountains!!!
  - Local Art Community / Public Art Murals
  - Breweries
  - Innovation / Oak Ridge National Labs

- I-40/75 congestion issues – exploration of bypass options / alternatives
- Access Management and Developer Requirements
- Consideration of sidewalk requirements for developments - discussion about possible TN state laws that limit authority of counties to require. Some / few counties include sidewalk requirements: Knox [<link>](#)
  - Planning regulations / review & change
    - Time & effort to review UDO codes / proactive changes
    - Form-based code trends
    - TDOT + Univ of Memphis :Statewide land use model standards – [<link>](#)
- Affordable Housing challenge in Knox County
- eCommerce delivery patterns, and its impact on travel / congestion patterns

#### Chat Box items:

- TDOT Vulnerable Road Users Safety Assessment [<link>](#)
- 2021 Statewide Active Transportation Plan [<link>](#)
  - Multimodal Priority Tool 2.0
- TDOT State Bike Route Network [<link>](#)
- TDOT Choice Lanes (“tolling”) – **Transportation Modernization Act 2023** [<link>](#)
- TDOT Congestion Studies – Knoxville Region: [<link>](#)
- TDOT Interstate Freight Bottleneck Analysis (2019) [<link>](#)
- TDOT Induced Demand Study (underway; 2025) [<link>](#)
- TDOT Quick Build projects for bike/ped – in process – **need link**
- USDOT Equitable Transportation Community (ETC) Explorer [<link>](#)
- UT Study of urban pedestrian crashes (2009-19) – roadway characteristics – **share PDF**

#### “PARKING LOT” of good ideas for **future** discussion(s) – send us **more links** regarding...

- “**Plan East Tennessee**” (Plan ET) report / process; no mechanism to push forward
- Induced Demand study – Memphis, TN
  - Recently initiated; anticipated by 2025 [<link>](#)
- “Traffic Signals are not the only solution” – need more alternative intersection concepts
- TDOT Quick Build projects for bike/ped – **expedited, or demonstration projects?**
- TPO: new boundary expected to be approved in Dec 2023
- Caliper – Travel Demand Model update - concurrent
  - Review of regional population forecasts including Woods & Poole and UT CBER data sources
  - Base yr 2022. Horizon years: 2030, 2040, 2050.
  - Minor update: Deadline Feb/Mar 2024

#### Action items:

##### TAC members

- Correct anything that we may have mislabeled, or described above
- Promote the Survey + Interactive map: <http://knoxmobility.org/feedback>
- Generate a list of ‘who’ else needs to be made aware of this MTP process – need your help!
- Compile & share regional photos showing all modes of travel

##### Stantec team

- Generate half-page flyer & sample email text to help promote website/survey
- Identify data/resource gaps, and request info
- Coordinate Community Engagement Round #1 logistics (Dec / Jan)
- Review financial trend spreadsheet
- Consider online survey for TAC members relating to project Goals and changes
- Review StreetLight data access for addressing specific questions (e.g., I-75/40 new connection)

**Attachments:** Attendees sign-in sheet, Presentation slides

# Knoxville 2050 MTP Update

TAC #1 Meeting

November 2023

#	Name / Department	Email
1	Dallas DeArmond TPO	dallas.dearmond@knoxplanning.org
2	Michael Hogan / City of Loudon	Michael.Hogan@cityofloudontn.org
3	Kathryn Baldwin / Anderson	Kbaldwin@hosc.Design
4	Tom Clabo / City of Knoxville	tclabo@knoxville.tn.gov
5	Brian Boone / City of Maryville	bboone@maryville-tn.gov
6	CHICO MESSER / Blount County	cmesser@blounttn.org
7	Darryl Smith / Farragut	dsmith@townof Farragut.org
8	Jim Snowden / Knox Co.	jim.snowden@knoxcounty.org
9	Lori Stoltenberg / City of Maryville	ltsoltenberg@maryville-tn.gov
10	Laura Smith / East TN Development District	lsmith@etdd.org
11	Troy Ebbert / TDOT LRP	Troy.Ebbert@tn.gov
12	Matt Mesberry / TDOT LRP	matt.mesberry@tn.gov
13	Jack Qualls / LCEDA	qualls@loudoncountyledd.org
14	Mike Conger	mike.conger@knoxtpo.org
15	Craig Luebke	craig.luebke@knoxtpo.org
16	Ally Ketm	ally.ketm@knoxplanning.org
17	Cathy Olsen	Cathy.olsen@knoxcounty.org
18	Emily Jackson	americorps@knoxplanning.org
19	Doug Burton / TPO	doug.burton@knoxtpo.org
20	TERRY GILHULA / PLANNING	terry.gilhula@knoxplanning.org
21	Aubrey Weiland / Planning	aubrey.weiland@knoxplanning.org
22	William Rogers / TDOT	william.rogers@tn.gov (zoom)
23	Zachary Coleman / FHWA	zachary.coleman@dot.gov (zoom)
24	Melanie Murphy @ FHWA	melanie.murphy@dot.gov (zoom)
25		

(continued on back)



1

## Agenda

1. Welcome / Introductions
2. Advisory Committee – Roles
3. Schedule
4. Outreach Strategy
5. Interactive Mapping Exercise
6. Action Items

2

# Project Team



## Knoxville TPO

Amy Brooks  
[Amy.brooks@knoxplanning.org](mailto:Amy.brooks@knoxplanning.org)

Mike Conger  
[mike.conger@knoxplanning.org](mailto:mike.conger@knoxplanning.org)

Craig Luebke  
[Craig.Luebke@knoxplanning.org](mailto:Craig.Luebke@knoxplanning.org)

Doug Burton  
[Doug.burton@knoxplanning.org](mailto:Doug.burton@knoxplanning.org)

Ally Ketron  
[Ally.Ketron@knoxplanning.org](mailto:Ally.Ketron@knoxplanning.org)



## TDOT

Michelle Christian  
[Michelle.A.Christian@tn.gov](mailto:Michelle.A.Christian@tn.gov)

Troy Ebbert  
[Troy.J.Ebbert@Tn.Gov](mailto:Troy.J.Ebbert@Tn.Gov)



## Stantec

Mike Rutkowski  
[mike.rutkowski@stantec.com](mailto:mike.rutkowski@stantec.com)

Timothy Tresohlavy  
[timothy.Tresohlavy@stantec.com](mailto:timothy.Tresohlavy@stantec.com)



3

# Metropolitan Transportation Plan is...

- Federal requirement – FHWA
- Long-range 20+ years
- Multimodal
- Fiscally-constrained
- Representation of **YOUR** local goals / needs



4

*This **plan** will be successful because...*



MOBILITYPLAN 2050

5

## Agenda

1. Welcome / Introductions
2. Advisory Committee – Roles
3. Schedule
4. Outreach Strategy
5. Interactive Mapping Exercise
6. Action Items

MOBILITYPLAN 2050

6

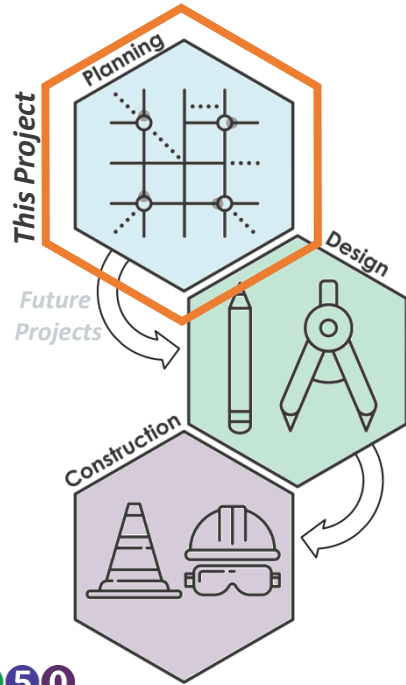
# Roles

## Stantec—the ‘process’

- Synthesizing information
- Facilitation
- Technical assistance and best practices

## Advisory Committee—the local experts

- Meeting logistics, scheduling
- Local area knowledge & community vision
- Identifying the “**who**” needs to be involved?
  - *YOU know YOU better than us!*



MOBILITYPLAN 2050

7

8

# General Timeline

**21-month time frame**  
Sept 2023 – May 2025



- Digital Public Outreach
  - Project website
  - Online survey
  - Interactive map
- Existing Conditions review
  - Data assembly
  - Prior plans / documents
- Focus Group “listening sessions”

- Synthesis of regional vision/goals
- Mobility gap analysis
- Planning factors / Performance Measures
- Financial projections to 2050
- Scenario planning & project review

- Synthesis of public feedback
- Prioritization
- Draft Plan
  - Public Comment Period
- Final Plan / Adoption

MOBILITYPLAN 2050

8

# Agenda

1. Welcome / Introductions
2. Advisory Committee – Roles
3. Schedule
4. Outreach Strategy
5. Interactive Mapping Exercise
6. Action Items



10

11

# Outreach Strategy

## What to expect...

### Website + Online Survey + Interactive Map

- Digital outreach 24-hours / 7-days

### Technical Advisory Committee (TAC)

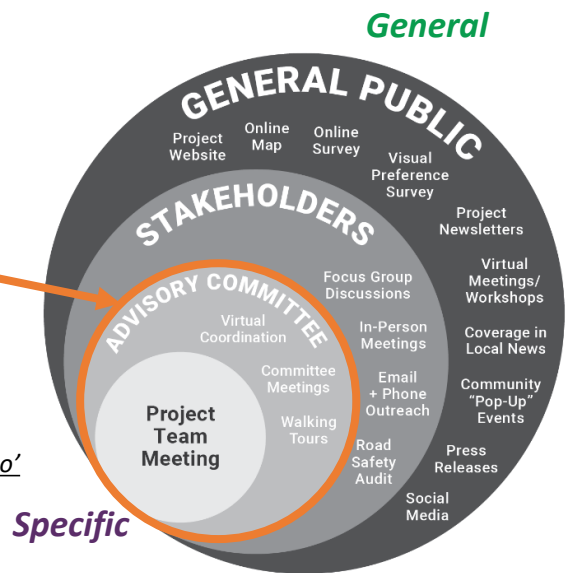
- Total of eight (8) – half virtual

### Community Events: two (2) rounds

- *Issues & Vision*: citizens provide direction
- *Priorities*: citizens provide feedback

### Focus Groups: up to six (6), virtual “listening”

- Topics identified – need help identifying the ‘who’



11



# Project Website

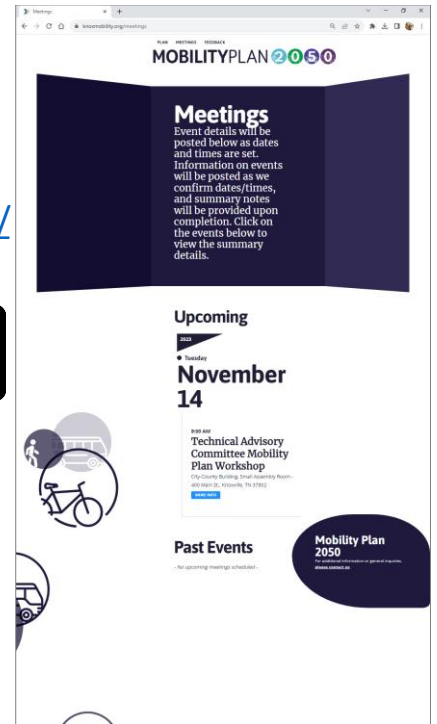
What we need from you: <https://knoxmobility.org/>

- Bookmark it!
- Share it!



Our launching point for Public Outreach

MOBILITYPLAN 2050



12

## Agenda

1. Welcome / Introductions
2. Advisory Committee – Roles
3. Schedule
4. Outreach Strategy
5. Interactive Mapping Exercise – *What we (think we) know...*
6. Action Items

MOBILITYPLAN 2050

13

# Before we start Polling....

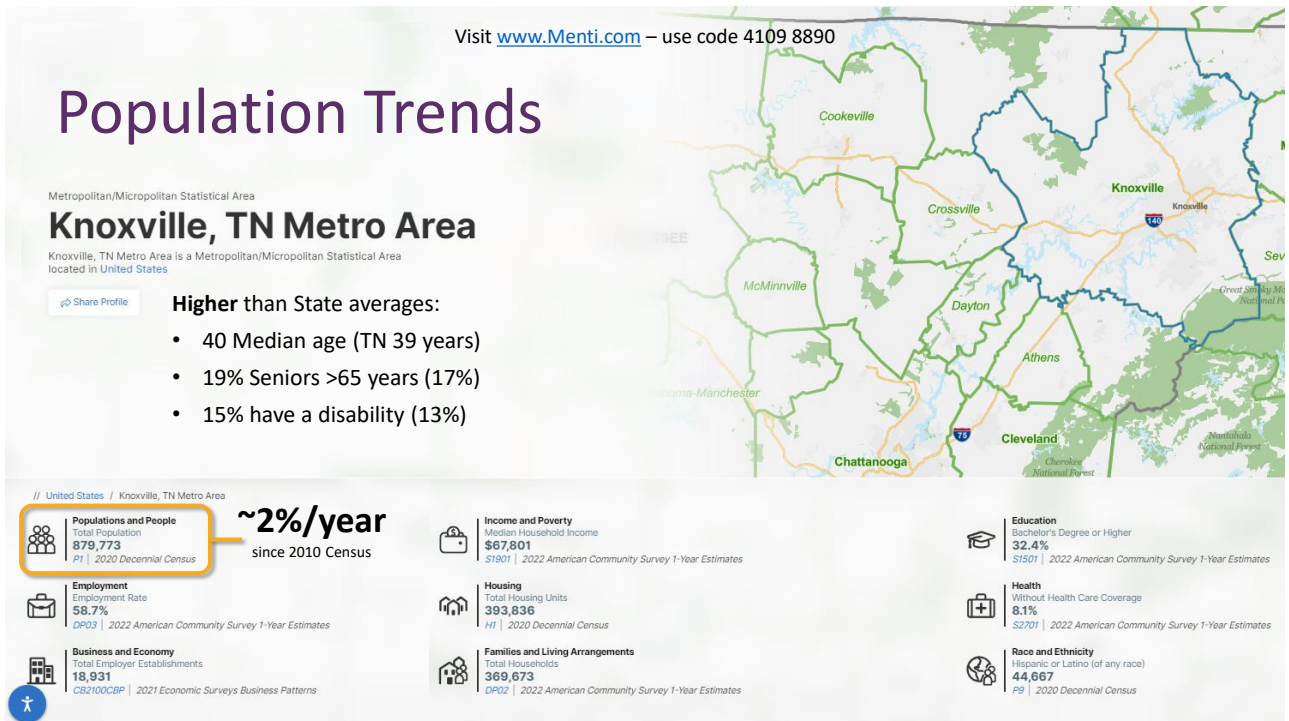
- Visit [www.Menti.com](http://www.Menti.com)
- Use code 4109 8890

or take a photo of this QR code



## MOBILITYPLAN 2050

14



15



# Cultural Amenities



Music Scene (Bluegrass, Country)



University of Tennessee, Knoxville



Smoky Mountains / Recreation



*Others?*

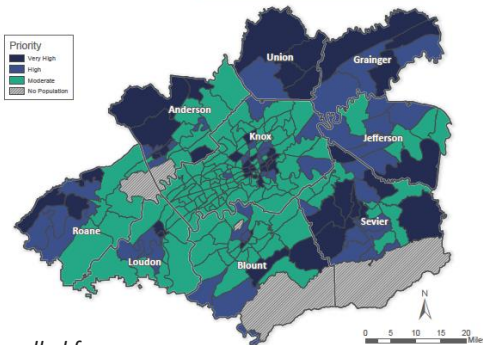
MOBILITYPLAN 2050

17

Visit [www.Menti.com](http://www.Menti.com) – use code 4109 8890

## Population Trends Continued

Priority Populations: Composite Score, 2022



### Demographics – Priority Population

All Census Tracts are at least moderate priority

Data Considerations:

- Map does not include **total population** information (downtown: small in size, higher in population)
- Not a substitute for community knowledge **Where are the areas in need?**

**Where can we download these data?**

Info pulled from



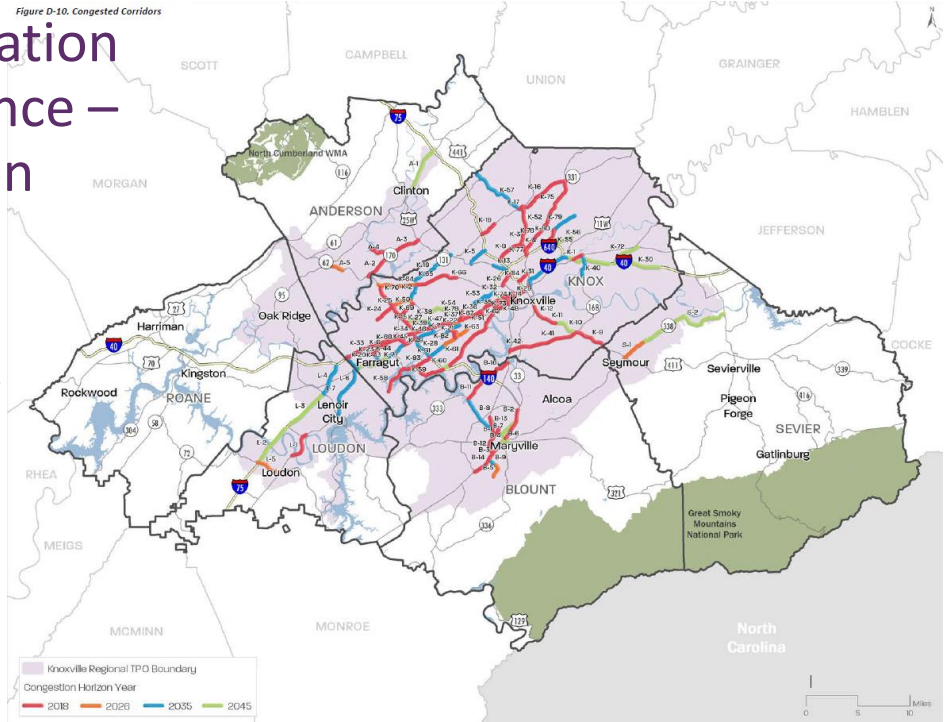
MOBILITYPLAN 2050

18



# Transportation Performance – Congestion

Figure D-10. Congested Corridors

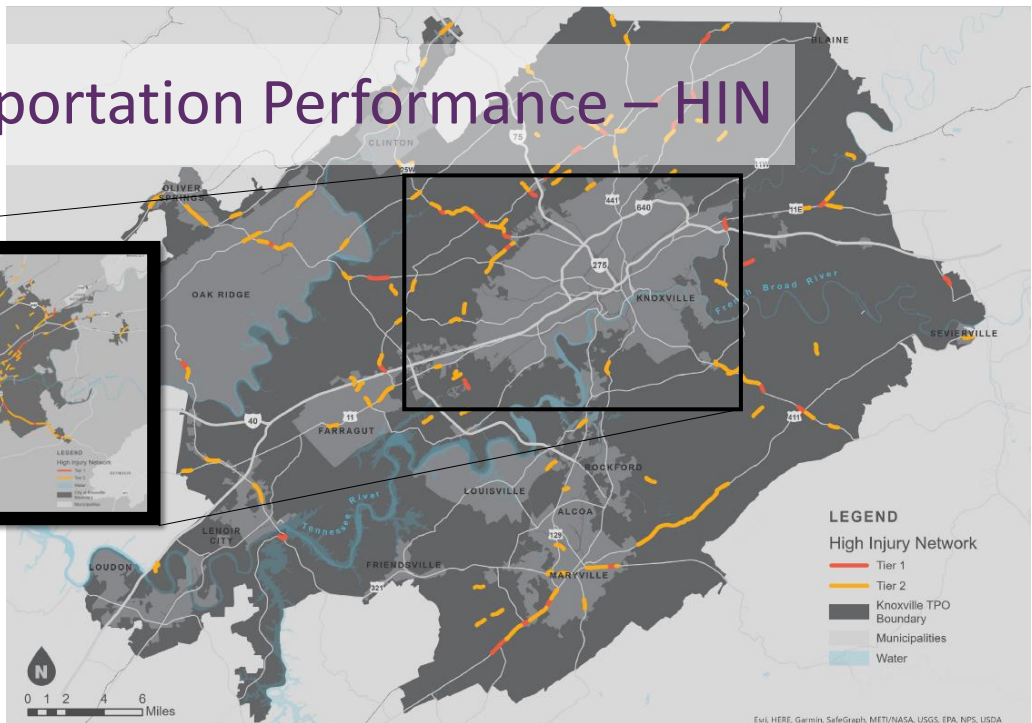


- How "bad" is bad?!
- Many segments prioritized
  - Knox County → outward



CMP – Appendix D of 2045 Mobility Plan

# Transportation Performance – HIN



How should we 'best' use this information?

# Transportation Performance – Biking, Walking & Transit

## What has changed since?

### 'Barometer' of 2021 conditions



**City of Knoxville:**  
71% of total bike lanes



**Farragut** (51% of roads)  
**Oak Ridge** (49% of roads)  
**Knoxville** (36% of roads)



**City of Knoxville:**  
57% of total greenways



**KAT Reimagined (ongoing):**

- New planned routes?
- Other service improvements?

*How are we serving our rural areas?!*



24

Visit [www.Menti.com](http://www.Menti.com) – use code 4109 8890

## Polling Time!

- Visit [www.menti.com](http://www.menti.com)
- Use code 4109 8890

or take a photo of this QR code



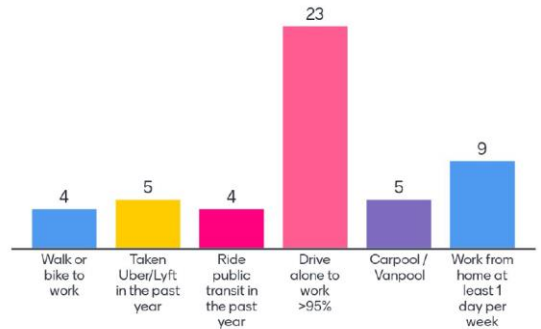
25

Visit [www.Menti.com](http://www.Menti.com) – use code 4109 8890

**QUESTION 1: How do YOU move around this region?**  
(check **all** that apply)

- A. Walk or bike to work
- B. Taken Uber/Lyft in the past year
- C. Ridden public transit in the past year
- D. Drive alone to work at least 95% of the time
- E. Carpool or Vanpool
- F. Work from home at least one day a week

**Q1: How do YOU move around this region?**



**MOBILITYPLAN 2050**

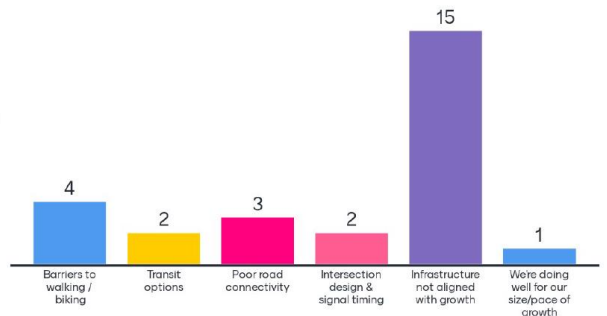
27

Visit [www.Menti.com](http://www.Menti.com) – use code 4109 8890

**Question 2: What's your biggest transportation ISSUE?**  
(choose one)

- A. Barriers to walking / biking
- B. Transit options
- C. Poor road connectivity
- D. Intersection design & signal timing
- E. Infrastructure not aligned with growth
- F. We're doing well for our size/pace of growth

**Q2: What's your biggest transportation ISSUE?**



**MOBILITYPLAN 2050**

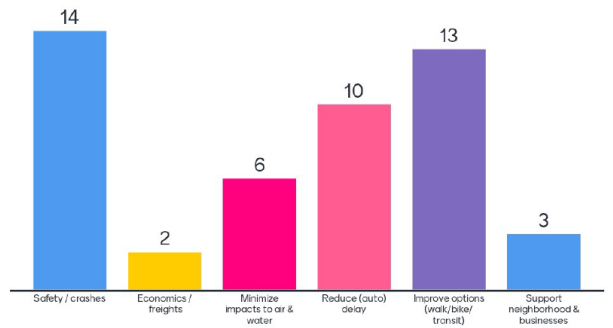
28

Visit [www.Menti.com](http://www.Menti.com) – use code 4109 8890

Question 3: What projects are MOST important to focus on? (choose two)

- A. Safety/Crashes
- B. Economics/ Freight
- C. Minimize impacts to air & water
- D. Reducing auto delay
- E. Improving options (walking, biking, transit)
- F. Supporting neighborhoods and business interests

Q3: What projects are MOST important to focus on?



MOBILITYPLAN 2050

29

Visit [www.Menti.com](http://www.Menti.com) – use code 4109 8890

Trends we see

- Technology emerging
- Cultural / Lifestyle shifts
- Aging populations
- Changing economy
- Hybrid/ WFH Work Choices
- Shrinking revenues



MOBILITYPLAN 2050

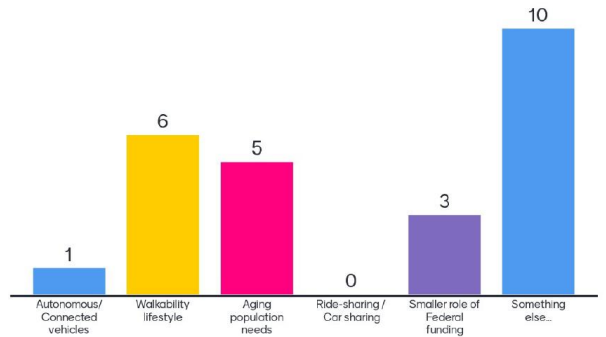
30



Visit [www.Menti.com](http://www.Menti.com) – use code 4109 8890

### QUESTION 4: Which trend has the most **IMPACT** on this region’s transportation future? (choose one)

- Q4: Which trend has the most **IMPACT** on this region's transportation future?
- A. Autonomous/Connected vehicles
  - B. Walkability lifestyle
  - C. Aging population needs
  - D. Ride-sharing / Car sharing
  - E. Smaller role of federal funding
  - F. Something else...



**MOBILITYPLAN 2050**

31

Visit [www.Menti.com](http://www.Menti.com) – use code 4109 8890

## Rethinking the Role of Streets



**MOBILITYPLAN 2050**

Photo Credit: <http://charlestoninsideout.net/historic-king-street-in-1915/>

32

Visit [www.Menti.com](http://www.Menti.com) – use code 4109 8890

## Rethinking the Role of Streets



MOBILITYPLAN 2050

Photo credit:  
<http://coastalconservationleague.org/news/blog/errors-omission/>

33

Visit [www.Menti.com](http://www.Menti.com) – use code 4109 8890

## Streets are Inadequate

- No sidewalks
- Too dangerous to cross on foot
- Uninviting for bus riders
- Not safe for bicyclists
- No room for people!
- Inaccessible for wheelchairs



MOBILITYPLAN 2050

34

Visit [www.Menti.com](http://www.Menti.com) – use code 4109 8890

## Every mode needs...

- Convenience
- Safety
- Comfort
- Access
- Predictability
- Affordability
- Reasonable travel time



**MOBILITYPLAN 2050**

35

## Safety benefits

- U.S. Pedestrian deaths are at the highest level in 41 years –
  - 7,500 struck and killed while walking on US streets
- Complete Streets reduce crashes through comprehensive safety improvements



**MOBILITYPLAN 2**

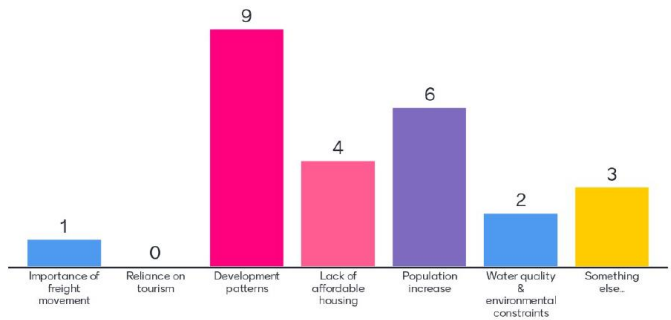
36

Visit [www.Menti.com](http://www.Menti.com) – use code 4109 8890

### Question 5: Which local feature makes transportation more challenging? (choose one)

- A. Importance of freight movement
- B. Reliance on tourism
- C. Development patterns
- D. Lack of affordable housing (people making longer trips)
- E. Population increase
- F. Water & environmental constraints
- G. Something else...

#### Q5: Which local feature makes transportation more challenging?



MOBILITYPLAN 2050

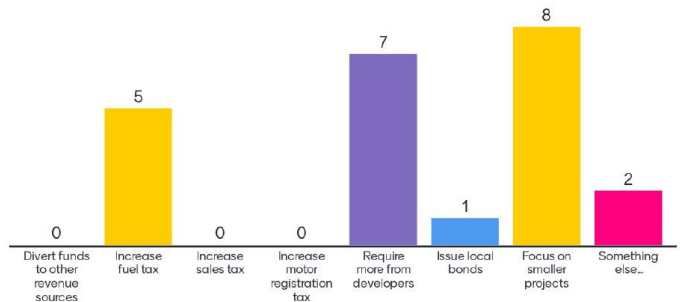
37

Visit [www.Menti.com](http://www.Menti.com) – use code 4109 8890

### Question 6: How can we build transportation projects FASTER? (choose one)

- A. Divert funds from other revenue sources
- B. Increase fuel tax
- C. Increase sales tax
- D. Increase motor registration tax
- E. Require more from developers (Impact Fees, etc.)
- F. Issue local bonds
- G. Focus on smaller, “bang-for-the-buck” projects
- H. Something else...

#### Q6: How can we build transportation projects FASTER?



MOBILITYPLAN 2050

38



- Let's talk Goals & Performance Measures!!!

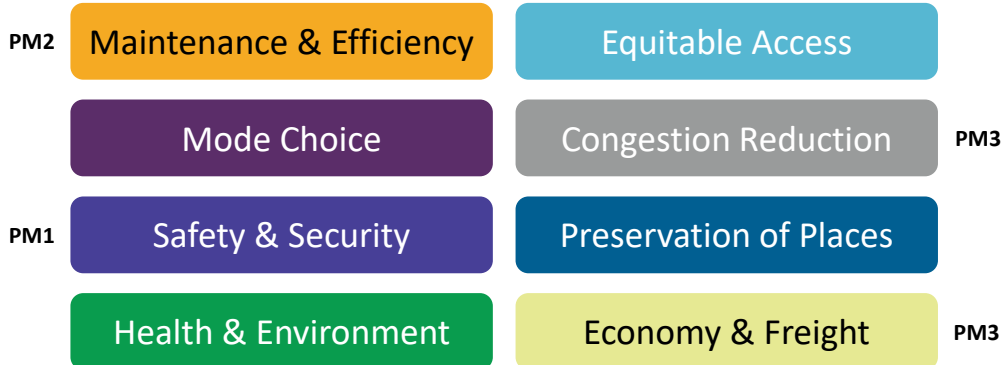
## MOBILITYPLAN 2050

39

## Discussion



Goals from 2045 Plan



## MOBILITYPLAN 2050

40

# Performance Measures

Table 1. Knoxville Regional TPO Goals and Performance Measures

	FAST ACT PLANNING FACTORS	REGIONAL GOALS	PERFORMANCE MEASURES
PM2	SYSTEM PRESERVATION	Maintenance and Efficiency Preserve and maintain our existing infrastructure through repaving projects, bridge replacements, access management, sidewalk repairs, and intersection improvements	<ul style="list-style-type: none"> <li>▶ Condition of regional roadways</li> <li>▶ Condition of regional bridges</li> <li>▶ Age of transit fleet vehicles</li> <li>▶ Percent of TPO funding for maintenance projects</li> </ul>
	ACCESSIBILITY AND MOBILITY	More Options Improve access to services and employment with bicycle and pedestrian facilities, and transit services	<ul style="list-style-type: none"> <li>▶ Percent commuters by active mode</li> <li>▶ Change in mileage of sidewalks, bikeways, and greenways</li> <li>▶ Jurisdiction implementation of ADA transition plan</li> <li>▶ Transit ridership per year</li> <li>▶ Number of households within a ¼ mile of high frequency transit service</li> <li>▶ Percent of TPO funding for multimodal transportation</li> </ul>
PM1	SAFETY	Safety and Security Reduce rates of crashes with serious injuries and fatalities. Reduce the region's vulnerability to incidents and threats	<ul style="list-style-type: none"> <li>▶ Annual number of vehicular crashes, serious injuries, and fatalities</li> <li>▶ Fatality and serious injury crash rates per 100 million VMT</li> <li>▶ Annual crashes, serious injuries, and fatalities involving pedestrians and bicyclists</li> <li>▶ Annual number of crashes involving commercial trucks</li> </ul>
	SECURITY	Health and Environment Minimize negative impacts on the environment and people's health, and increase access to active transportation/physical activity for all ages	<ul style="list-style-type: none"> <li>▶ Amount of criteria pollutant emission reductions</li> <li>▶ 2-year and 4-year cumulative reported emission reductions, for all projects funded by CMAQ funds</li> <li>▶ VMT per capita</li> </ul>
PM3	CONNECTIVITY	Equitable Access Connect communities to opportunities and services throughout the region, particularly areas with high proportions of low income, senior, and minority populations	<ul style="list-style-type: none"> <li>▶ Number of households in very high and high priority population areas within a ¼ mile of bicycle or pedestrian facility</li> <li>▶ Number of households in very high and high priority population areas within a ¼ mile of high frequency transit service</li> <li>▶ Percent of TPO funding in very high and high priority areas</li> </ul>
	SYSTEM EFFICIENCY	Congestion Reduction Use our system more efficiently through technology like traffic signal coordination, real time traffic info, and emergency response vehicles	<ul style="list-style-type: none"> <li>▶ Interstate travel time reliability</li> <li>▶ Non-interstate NHS travel time reliability</li> <li>▶ Smart Trips Program VMT reduction parameters</li> </ul>
	RESILIENCY AND RELIABILITY	Preservation of Places Preserve natural and cultural areas and places that make our region unique (e.g. mountains, open space, farmland, viewsheds, small communities)	<ul style="list-style-type: none"> <li>▶ Percent of TPO funding located in existing urban centers</li> <li>▶ Percent of TPO funding located within or along existing, major transportation corridors</li> </ul>
	ECONOMIC VITALITY TRAVEL & TOURISM	Economy and Freight Improve intermodal connections to help move freight to and through the region. Reduce delay on major freight corridors	<ul style="list-style-type: none"> <li>▶ Truck travel time reliability</li> <li>▶ Average hours of delay on freight corridors</li> <li>▶ Annual tonnage and value of exported freight</li> <li>▶ Economic impact of tourism</li> </ul>



42

## Agenda

1. Welcome / Introductions
2. Advisory Committee – Roles
3. Schedule
4. Outreach Strategy
5. Interactive Mapping Exercise
6. Action Items

43

# Coordination Items

## Background Resources

- Previous studies / plans / reports?
- Additional data sources?
- What don't we know?



MOBILITYPLAN 2050

# Action Items

## We need from YOU...

- Send us more data / resources! – Fill the knowledge gap
- **PROMOTE** Project Website – survey – Interactive Map

## STANTEC is working towards...

- Existing conditions / synthesis
- TAC #2 – tbd
- Community Event – Round #1 – Dec-Jan 2025
  - Multiple events / dates

MOBILITYPLAN 2050